

- **B2432H** 24-3/4"L x 32-1/4"D x 82-1/2"H
- **B2432H-4** 24-3/4"L x 32-1/4"D x 82-1/2"H
- **B3632H** 36-3/4"L x 32-1/4"D x 82-1/2"H
- **B3632H-4** 36-3/4"L x 32-1/4"D x 82-1/2"H

Included

- NOTE: The additional shelf option significantly increases electrical load for model. Refer to the -4 suffix model for these specifications.
- Flat upper front panel & header
- Integrated average product temperature of 160°F
- One year parts & labor warranty
- Shelving removable and adjustable on 1" centers
- Stainless steel interior
- Top light (matches shelf lights)



B3632H

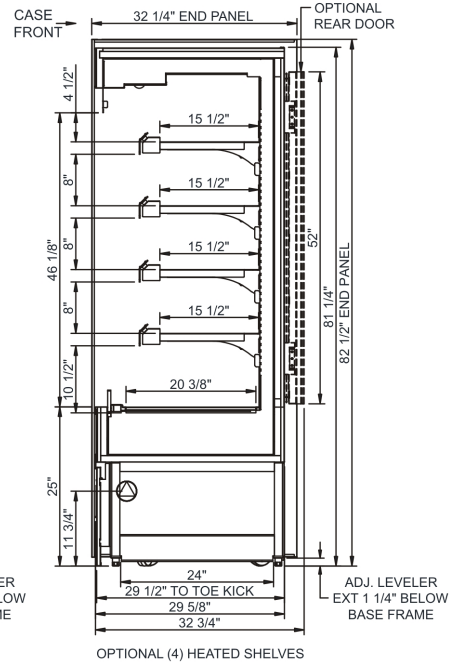
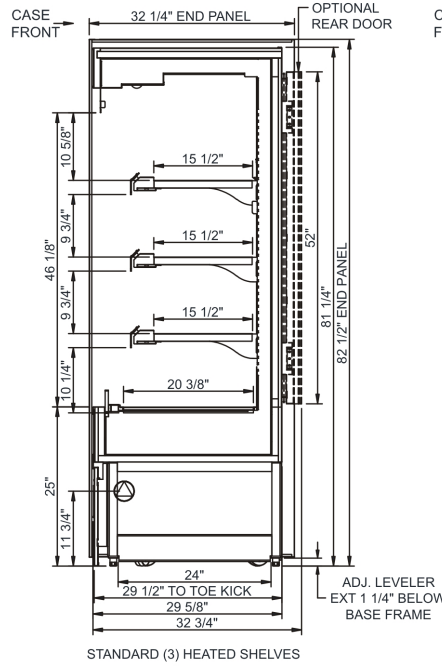
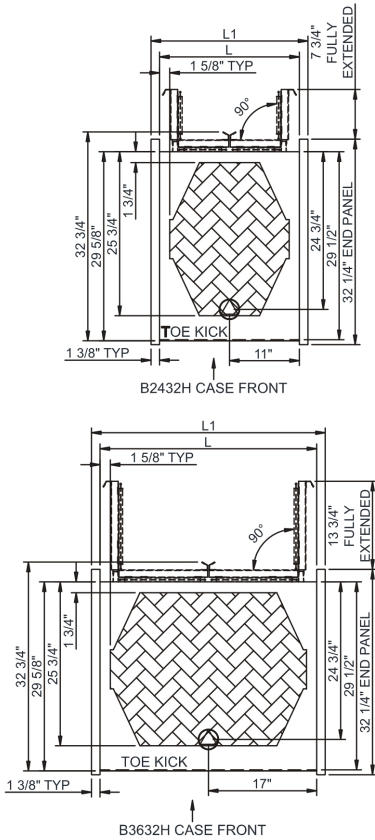
Specify	Standard Features	Additional Options
EXTERIOR COLOR	• Laminate - Standard colors	• All other laminates • Stainless steel (includes lower front panel)
LOWER FRONT PANEL COLOR	• Painted - Black	• Stainless steel (w/stainless ext. only)
BASE	• Casters w/ levelers	
END PANEL LEFT	• Full end panel w/mirror interior (metal edge matches interior color)	• Cutaway end panel (metal edge matches interior color)
END PANEL RIGHT	• Full end panel w/mirror interior (metal edge matches interior color)	• Cutaway end panel (metal edge matches interior color)
EXTERIOR BACK PANEL	• Solid back panel, black	• Rear loading swing out doors (black) • Rear loading swing out doors (stainless)
SHELVING	• Individually controlled solid heated shelves, lighted (incandescent) - 3 levels	• Individually controlled solid heated shelves, lighted (ceramic metal halide) - 3 levels ¹ • Individually controlled solid heated shelves, lighted (ceramic metal halide) - 4 levels ² • Individually controlled solid heated shelves, lighted (incandescent) - 4 levels
LIGHTS	• Incandescent lights	• Ceramic Metal Halide high efficiency lighting
ELECTRICAL CONNECT	• 6' Straight blade power cord (base exit)	• 6' Locking blade power cord (base exit) • 6' Locking blade power cord (top exit) • 6' Straight blade power cord (top exit) • Electrical leads (remote)
MISCELLANEOUS		• Second year parts & labor warranty (excludes compressor)
ACCESSORIES		• Price tag molding (matches interior color)

Option Notes: 1 - See -4 tech spec for load reqmts
2 - See -4 tech spec for load reqmts

Intended Environment: Type I - Designed to operate in ambient conditions of 75°F with 55% relative humidity unless noted otherwise in system information below.		
Zone	Intended Product To Be Displayed	Warmest Avg Prod Temp ° F
1	Packaged heated product	160

PLAN VIEW

SIDE VIEW



NOTE: ALL DIMENSIONS APPROXIMATE

- ELECTRICAL JUNCTION BOX (SUPPLIED WITH 6" LEADS OR POWER CORD).
- REMOTE FLOOR SINK & UTILITIES ACCESS AREA.
- LOCATION OF DRAIN TUBE FOR REMOTE REF. ONLY (SUPPLIED WITH 3/4" OR 1 1/2" PVC TUBE).
- SELF-CONTAINED CASE SERVICE ACCESS AREA.
- REFRIGERATION LINE CONNECTION.
- DRY CASE SERVICE ACCESS AREA.

Model Technical Specifications

Model	L"	L1"	L2"	System Circuit Volts		Phs	Freq	Amps ***	Watts	Wires	NEMA Plug	SST	Conv. Rack RTU/H	Para. Rack RTU/H	Est Wt
				Heat (N/A)	Circuit #1										
B2432H	22.00	24.75	.00	Heat (N/A)	Circuit #1	1	60	13.91	2,942	2+G	6-20P or L6-20P	N/A	N/A	N/A	800
				Heat (N/A)	Circuit #1										
B2432H-4	22.00	24.75	.00	Heat (N/A)	Circuit #1	1	60	15.30	3,252	2+G	6-20P or L6-20P	N/A	N/A	N/A	800
				Heat (N/A)	Circuit #1										
B3632H	34.00	36.75	.00	Heat (N/A)	Circuit #1	1	60	20.43	4,311	2+G	6-30P or L6-30P	N/A	N/A	N/A	1,000
				Heat (N/A)	Circuit #1										
B3632H-4	34.00	36.75	.00	Heat (N/A)	Circuit #1	1	60	22.38	4,746	2+G	6-30P or L6-30P	N/A	N/A	N/A	1,000
				Heat (N/A)	Circuit #1										

*** Does not include electric defrost on freezer models.

Regulatory Approvals:

All Models	ETL Listed to UL 197 ETL Listed to CAN/CSA 22.2 No. 109 ETL Sanitation to NSF/ANSI 4
------------	--



Important Notes:

- ELECTRICAL NOTE: If GFCI is required, a GFCI breaker MUST be used in lieu of a GFCI receptacle
- Performance issues (product temperatures, water on floor, etc.) caused by adverse conditions are not covered by warranty.
- Keep unit at least 15' from exterior doors, overhead HVAC vents, or any air curtain disruption.
- Do not expose unit to direct sunlight or any heat source (ovens, fryers, etc.).

⚠ WARNING: This product can expose you to chemicals, including Urethane (Ethyl Carbamate), which are known to the State of California to cause cancer and birth defects or other reproductive harm. For more information go to www.P65Warnings.ca.gov.